

NOTES

1. ROHS COMPLIANT
2. MATERIALS:
 FIBER OPTIC: 1.5MM DIA OPTICAL CORE , 2.2MM DIA POLYETHYLENE CABLE JACKET
 LENS MOUNT: OPTICAL GRADE ACRYLIC

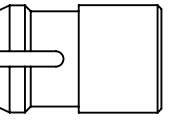
 LED MOUNTS: NYLON 66, UL RATING 94-V2
 LENS: POLYCARBONATE UL RATING 94-V2
 LENS SPACER: POLYPROPYLENE
3. OPTICAL CORE ENDS POLISHED TO 10 MICRONS.
4. PANEL MOUNTING HOLE .250" ON 3/8" CENTERS
5. PANEL THICKNESS FOR CLF 280: 1/16" TO 1/8"; CLB 300, CLR 301 AND SQB 400: 1/32" TO 1/4".
6. FOR PANELS LESS THAN 3/16" USE SPC 125 SPACER
7. FOR ADDED SECURITY USE RNG 268.
8. FOR BEST RESULTS USE ONLY NARROW VIEWING ANGLE NON-DIFFUSED LEDS WITH OUTPUT POWER GREATER THAN 100mcd.
9. U.S. AND FOREIGN PATENS ISSUED.

LIGHT PIPE ASSEMBLY ORDERING CODE (EXAMPLE): **FLX 02**

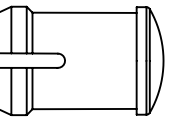
REVISIONS					
ZONE	ECN #	REV.	DESCRIPTION	DATE	INITIALS
		001	INITIAL RELEASE	7-8-09	SMU

LENGTH	
LENGTH CODE	ACTUAL LENGTH
02	2.0"
04	4.0"
06	6.0"
08	8.0"
12	12.0"
CUSTOM LENGTHS AVAILABLE	

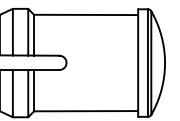
LENS OPTIONS (ORDER SEPARATELY)



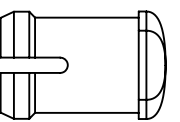
CLF 280



CLB 300

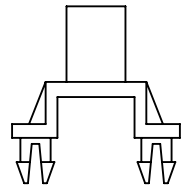


CLR 301

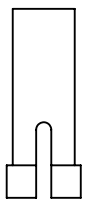


SQB 400

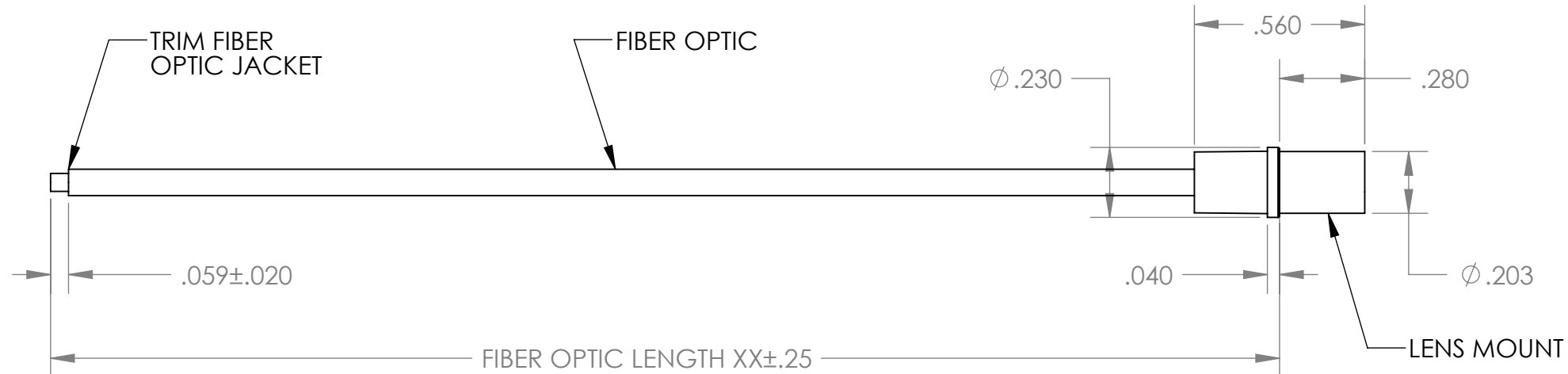
MOUNTING OPTIONS (ORDER SEPARATELY)



SMD 22



THR 22



UNLESS OTHERWISE SPECIFIED DIMENSIONS ARE IN INCHES		INITIALS	DATE
ANGLES	DECIMALS		
±03'	.X ±.030		
FINISH	.XX ±.015		
63	.XXX ±.004		
✓ BREAK ALL CORNERS AND SHARP EDGES .030 MAX			
<p>THIRD ANGLE PROJECTION</p>			
<p>PROPRIETARY AND CONFIDENTIAL</p> <p>THE INFORMATION CONTAINED IN THIS DRAWING IS THE SOLE PROPERTY OF VISUAL COMMUNICATIONS COMPANY, INC. ANY REPRODUCTIONS IN PART OR AS A WHOLE WITHOUT THE WRITTEN PERMISSION OF VISUAL COMMUNICATIONS COMPANY IS PROHIBITED</p>			
DRAWN	SMU	7-8-09	
CHECKED	AZ	7-14-09	
ENG APPR.	DPZ	7-14-09	
PURCH.			
Q.A.			
MFG APPR.			
MATERIAL:	SEE NOTES		
FOR:			

Visual Communications Company
 190 Bosstick Boulevard, Suite 101
 San Marcos, CA 92069 USA

DWG. NO.

FLX XX

SIZE **B** TITLE: FLEXFIRE (TM) FLEXIBLE LIGHTPIPE ASSY REV: 001

SCALE: 1:1 WEIGHT: LBS SHEET 1 OF 1